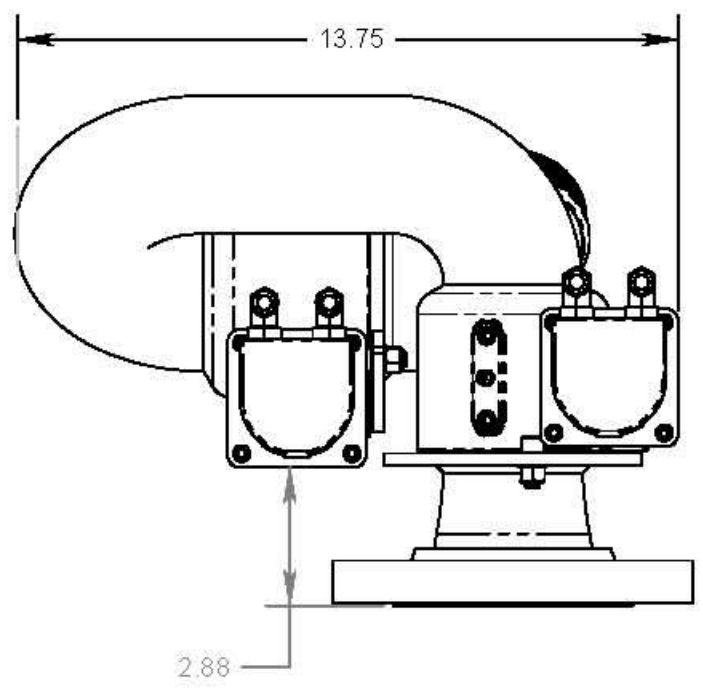
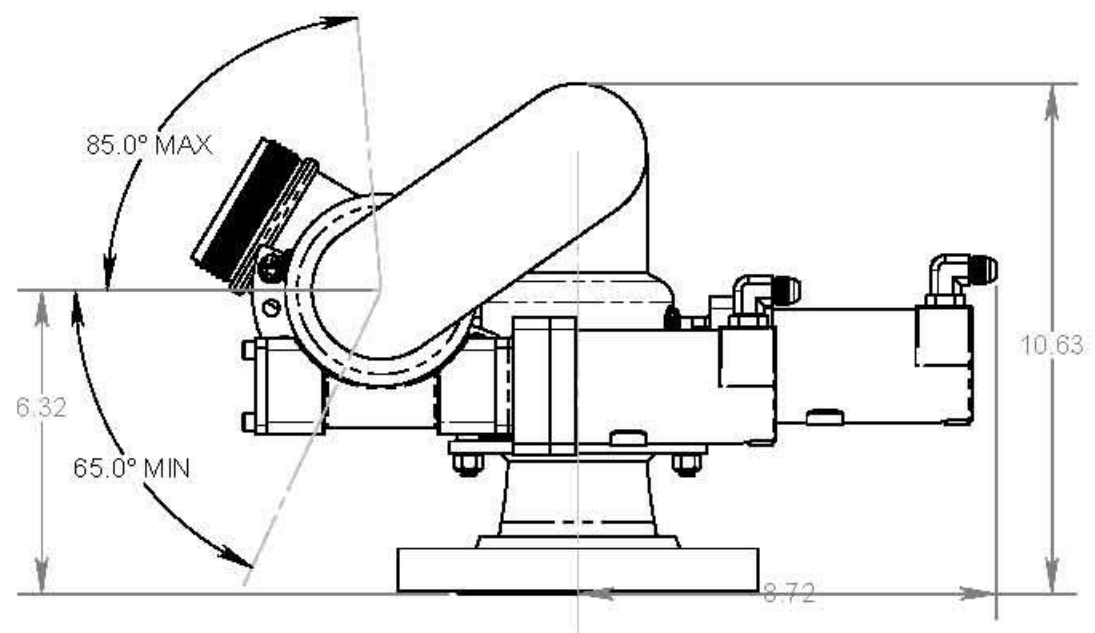
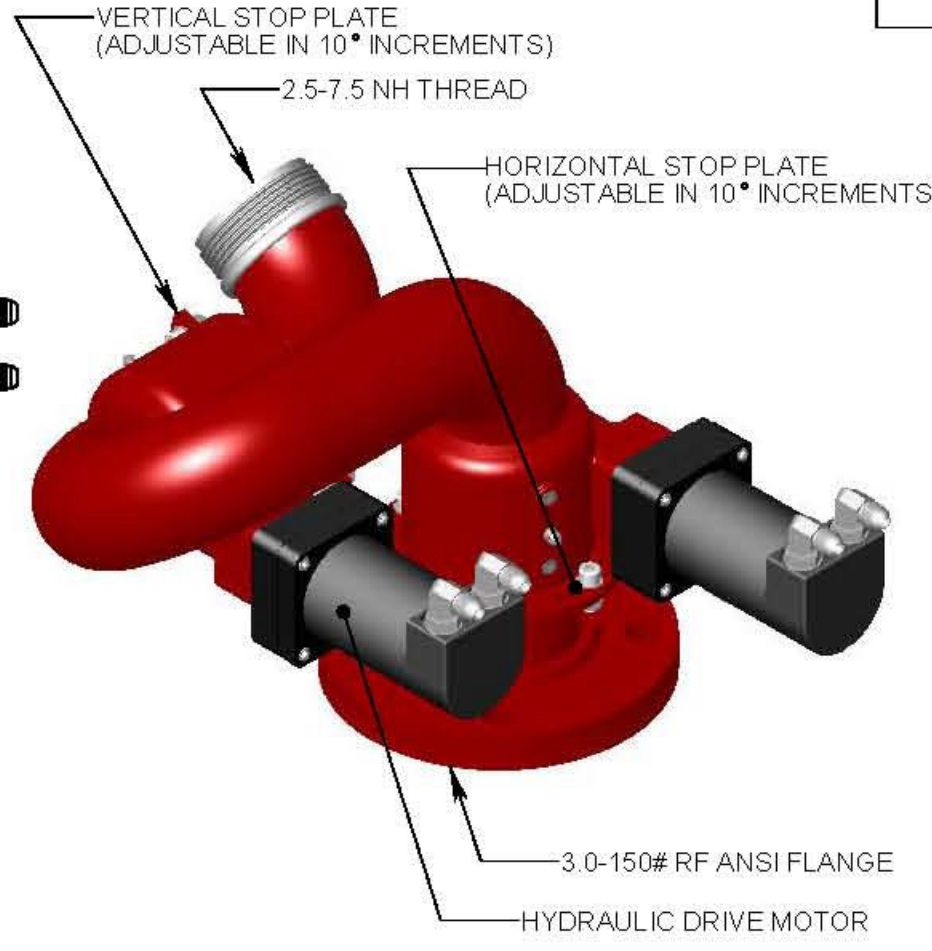
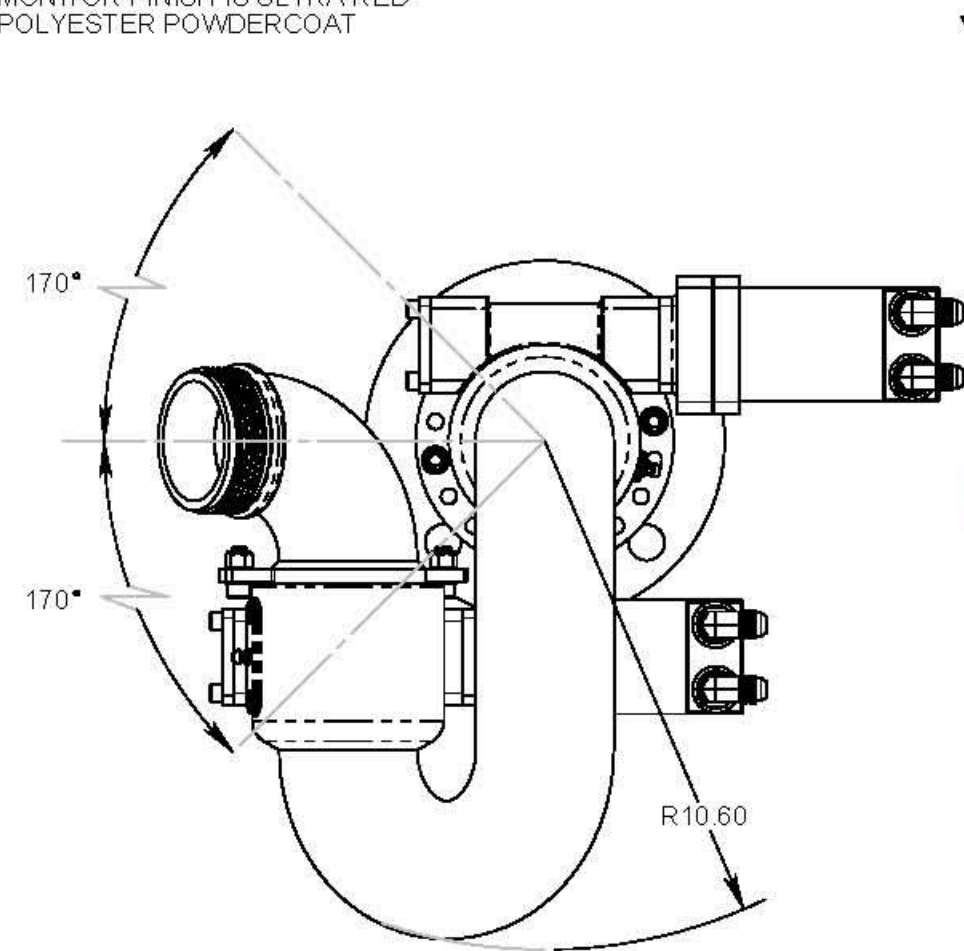


- NOTES:  
 1) DO NOT SCALE THIS DRAWING  
 2) REMOVE ALL BURRS & SHARP EDGES  
 3) MONITOR FINISH IS ULTRA-RED POLYESTER POWDERCOAT

REVISIONS			
REV.	DESCRIPTION	DATE	BY
A	INITIAL RELEASE	09/25/07	RBS
B	CHANGED FLANGE CALL-OUT TO 3.0-150#	9/27/2007	RBS



### SPECIFICATIONS:

**WATER:**  
 FLOWRATE: 250-1000 USGPM  
 OPER. PRESSURE RANGE: 50-150 PSIG  
 PRESSURE LOSS @ 750 USGPM: 18 PSIG  
 OPTIMUM OPER. PRESSURE: 120PSIG (INLET)

**HYDRAULICS:**  
 FLOWRATE: .25 USGPM  
 OPER. PRESSURE RANGE: 200-300 PSIG  
 OPTIMUM PRESS.: 200 PSIG

**SPEED:**  
 VERTICAL SWEEP RATE: 9.8°/SEC. @ .50 GPM  
 HORIZONTAL SWEEP RATE: 9.8°/SEC. @ .50 GPM

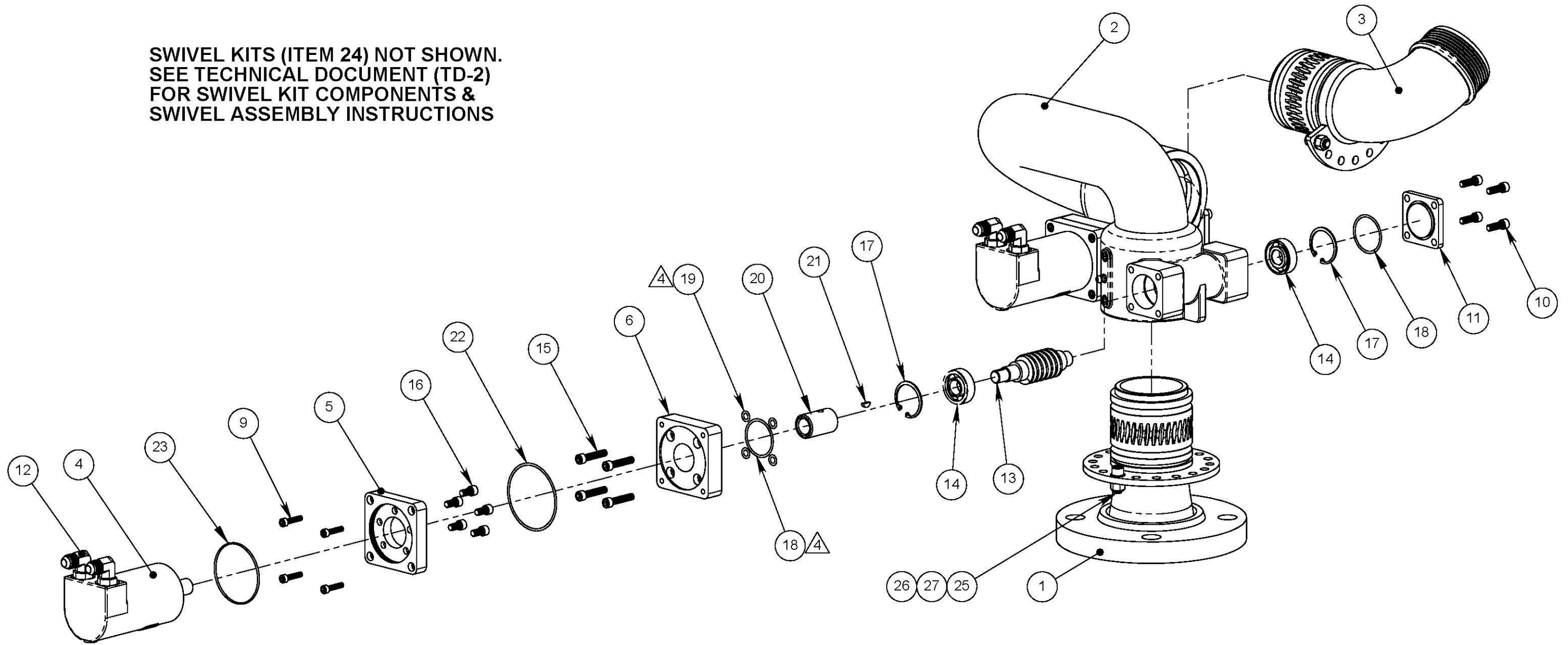
**MOUNTING:**  
 INLET: 3.0" 150# RF FLANGE  
 OUTLET: 2.5-7.5 MALE NH THREAD

**MATERIALS:**  
 WATERWAY: CARBON STEEL (COATED INSIDE AND OUT)  
 SWIVELS: STAINLESS STEEL  
 THREAD BUTT: STAINLESS STEEL  
 UNIT WEIGHT: 52 LBS (DRY)

**PROPRIETARY AND CONFIDENTIAL**  
 THE INFORMATION CONTAINED IN THIS DRAWING IS THE SOLE PROPERTY OF FIREPRO MONITORS. ANY REPRODUCTION IN PART OR AS A WHOLE WITHOUT THE WRITTEN PERMISSION OF FIREPRO MONITORS IS PROHIBITED.

UNLESS OTHERWISE SPECIFIED:		NAME	DATE	<b>FirePro Monitors</b> City of Industry, CA 91744
DIMENSIONS ARE IN INCHES		DRAWN	RBS 09/25/07	
TOLERANCES: ANGULAR: MACH±1° BEND ±2° TWO PLACE DECIMAL ±.030 THREE PLACE DECIMAL ±.005 ALL MACHINED SURFACES ✓		CHECKED		
INTERPRET GEOMETRIC TOLERANCING PER: ANSI Y14.5		Q.A.		<b>MONITOR, 2.5" HYD. ULTRA-LOW</b>
MATERIAL		COMMENTS:		
FINISH NONE		SIZE	DWG. NO.	REV
DO NOT SCALE DRAWING		<b>B</b>	<b>FP3-750-HYD</b>	<b>B</b>
		SCALE: 1:4	WT:	SHEET 1 OF 3

SWIVEL KITS (ITEM 24) NOT SHOWN.  
SEE TECHNICAL DOCUMENT (TD-2)  
FOR SWIVEL KIT COMPONENTS &  
SWIVEL ASSEMBLY INSTRUCTIONS



ASSEMBLY INSTRUCTIONS:

1. ASSEMBLE ELBOW WELDMENTS USING TECHNICAL DOCUMENT# TD-2
2. APPLY LOCTITE #242 TO ALL SCREW THREADS
3. APPLY MOLYDENUM GREASE TO ALL MOVING PARTS: WORMS, GEAR CUTS SEALS, ....ETC.
4. USE GREASE OR A SMALL AMOUNT OF SILICONE SEALANT TO HOLD O-RINGS IN PLACE DURING ASSEMBLY.

**PROPRIETARY AND CONFIDENTIAL**

THE INFORMATION CONTAINED IN THIS DRAWING IS THE SOLE PROPERTY OF FIREPRO MONITORS. ANY REPRODUCTION IN PART OR AS A WHOLE WITHOUT THE WRITTEN PERMISSION OF FIREPRO MONITORS IS PROHIBITED.

UNLESS OTHERWISE SPECIFIED:		NAME	DATE	<b>FirePro Monitors</b> City of Industry, CA 91744		
DIMENSIONS ARE IN INCHES		DRAWN	RBS 09/25/07			
TOLERANCES:		CHECKED				
ANGULAR: MACH±1°		Q.A.				
BEND ±2°		<b>MONITOR, 2.5" HYD. ULTRA-LOW</b>				
TWO PLACE DECIMAL ±.030						
THREE PLACE DECIMAL ±.005						
ALL MACHINED SURFACES $\sqrt{125}$						
INTERPRET GEOMETRIC TOLERANCING PER: ANSI Y14.5		COMMENTS:		SIZE	DWG. NO.	REV
MATERIAL				<b>B</b>	<b>FP3-750-HYD</b>	<b>B</b>
FINISH				SCALE: 1:4	WT:	SHEET 2 OF 3
DO NOT SCALE DRAWING						

ITEM NO.	QTY.	PART NUMBER	DESCRIPTION
1	1	FP10320	BASE INTAKE, 2.5" ULTRA-LOW
2	1	FP10330	ELBOW ASS'Y, LOWER, 2.5" ULTRA-LOW
3	1	FP10340	ELBOW ASS'Y, UPPER, 2.5" ULTRA-LOW
4	2	FP10346-3	MOTOR, HYDRAULIC, 1.21 CU-IN DISP.
5	2	FP10343	PLATE, HYD MOTOR MTG.
6	2	FP10342	ADAPTER, HYD. MOTOR MTG.
7	2	FP10324	FITTING, ZERK, STR, 1/4-28UNF, 302SS
8	4	FP10070-375-24-25	SET SCREW, CUP, 3/8-24UNF X .25L, 18-8
9	8	FP10325-190-24-875	SCREW, SHC, 10-24UNC X .875L, 18-8
10	8	FP10325-250-20-75	SCREW, SHC, 1/4-20UNC X .75L, 18-8
11	2	FP10345-1	COVER, WORM HOUSING
12	4	FP10347	ADAPTER, 9/16-18(M)SAE X 9/16-18(M)JIC, STL
13	2	FP10341-1	WORM, 1.166D, 12DP, AL-BRZ
14	4	FP10313-2	BEARING, ANGULAR, 35mmOD X 15mmID X 11mmTHK
15	8	FP10325-250-20-125	SCREW, SHC, 1/4-20UNC X 1.25L, 18-8
16	10	FP10325-250-28-50	SCREW, SHC, 3/8-16UNC X 1.00L, 18-8
17	4	FP10326-137H	RETAINING RING, INT., 1.375 DIA., SS
18	4	FP10171-028	O-RING, 1.375ID X .070CS BUNA-N
19	8	FP10171-010	O-RING, AS568A-010, .250ID X .070Cs, VITON
20	2	FP10344	ADAPTER, MOTOR/SHAFT
21	2	FP10314	WOODRUFF KEY, .375 X .188, STL
22	2	FP10171-037	O-RING, AS568A-037, 2.500ID X .070Cs, BUNA-N
23	2	FP10171-036	O-RING, AS568A-036, 2.375ID X .070 Cs, BUNA-N
24	2	FP10325-HYD	SWIVEL KIT, 2.5" NOM.
25	4	FP10325-313-18-75	SCREW, SHC, 5/16-18UNC X .75L, 18-8
26	4	FP10110-313-18	NUT, NYLOCK, 5/16-18UNC, 18-8
27	8	FP10203-563-328-032	WASHER, .562OD X .328ID X .032T, 18-8
28	1	FP10360	HYDRANT MANIFOLD
29	1	FP10985-2	CONTROL PANEL HYDRANT

UNLESS OTHERWISE SPECIFIED:		NAME	DATE	<b>FirePro Monitors</b> City of Industry, CA 91744
DIMENSIONS ARE IN INCHES		DRAWN	RBS 09/25/07	
TOLERANCES:		CHECKED		
ANGULAR: MACH ±1°		Q.A.		
BEND ±2°		<b>MONITOR, 2.5" HYD. ULTRA-LOW</b>		
TWO PLACE DECIMAL ±.030				
THREE PLACE DECIMAL ±.005				
ALL MACHINED SURFACES .125				
INTERPRET GEOMETRIC TOLERANCING PER: ANSI Y14.5		COMMENTS:		
MATERIAL				
FINISH NONE				
DO NOT SCALE DRAWING				
<b>PROPRIETARY AND CONFIDENTIAL</b> THE INFORMATION CONTAINED IN THIS DRAWING IS THE SOLE PROPERTY OF FIREPRO MONITORS. ANY REPRODUCTION IN PART OR AS A WHOLE WITHOUT THE WRITTEN PERMISSION OF FIREPRO MONITORS IS PROHIBITED.		SIZE	DWG. NO.	REV
		<b>B</b>	FP3-750-HYD	<b>B</b>
		SCALE: 1:4	WT:	SHEET 3 OF 3